



10th International Geography Olympiad

Kyoto, Japan

30 July – 5 August 2013

Written Response Test

Resource Booklet

Do NOT open the Booklet before instructed to do so by a supervisor.

Your answers will NOT be marked if you write them in this Resource Booklet.



10th International Geography Olympiad

Kyoto, Japan

30 July – 5 August 2013

Written Response Test

Resource Booklet

Do NOT open the Booklet before instructed to do so by a supervisor.

Your answers will NOT be marked if you write them in this Resource Booklet.

Section B: Volcanoes and Tectonic Activity

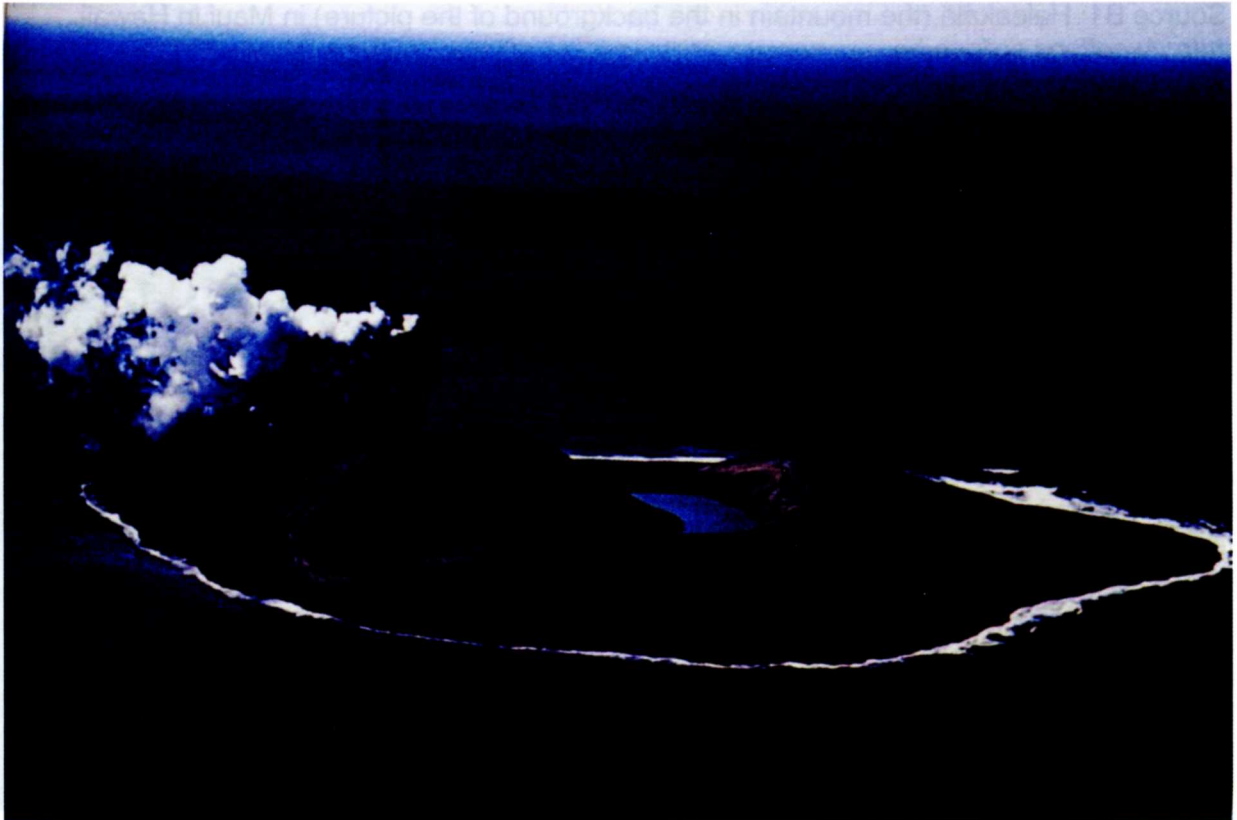
Source B1: Haleakalā (the mountain in the background of the picture) in Maui in Hawaii.
<http://weetlogs.scilogs.be>



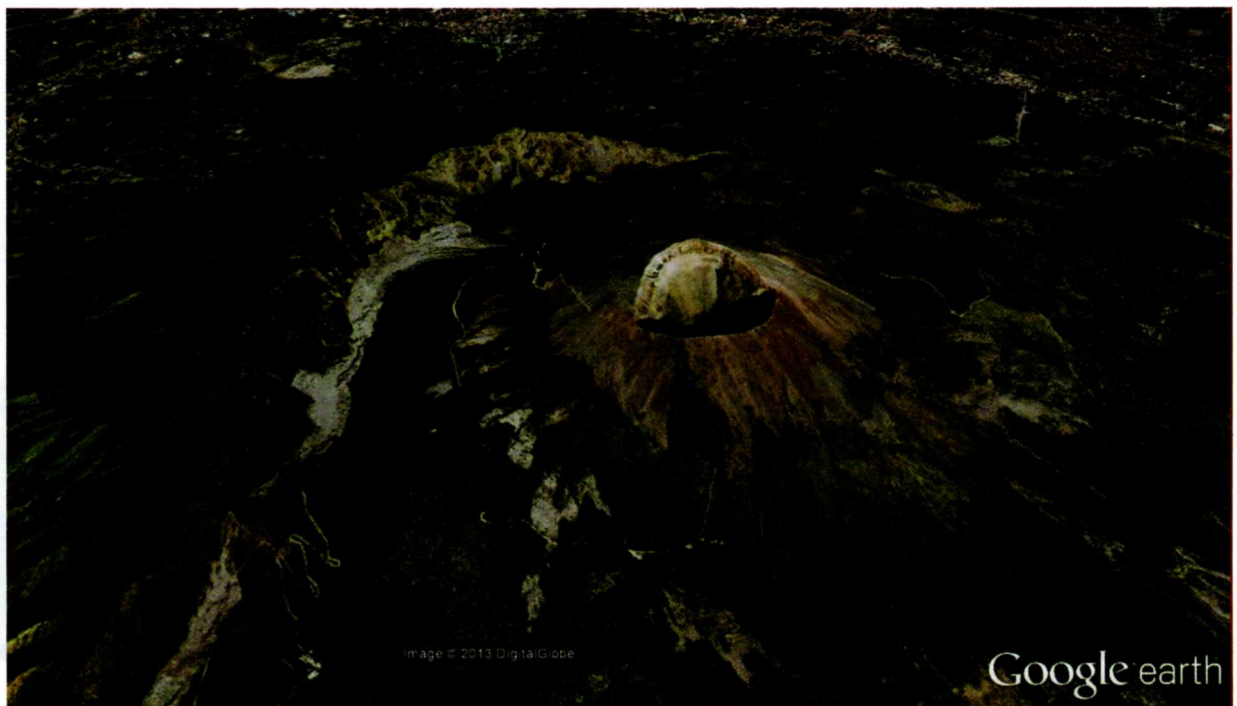
Source B2: Merapi in Java in Indonesia.
<http://www.vulkanisme.nl/mount-merapi.php>



Source B3: Surtsey, south of Iceland in the Atlantic Ocean.
<http://peripluscd.files.wordpress.com/2013/03/volcano.jpeg>



Source B4: Photograph of an active volcanic area.



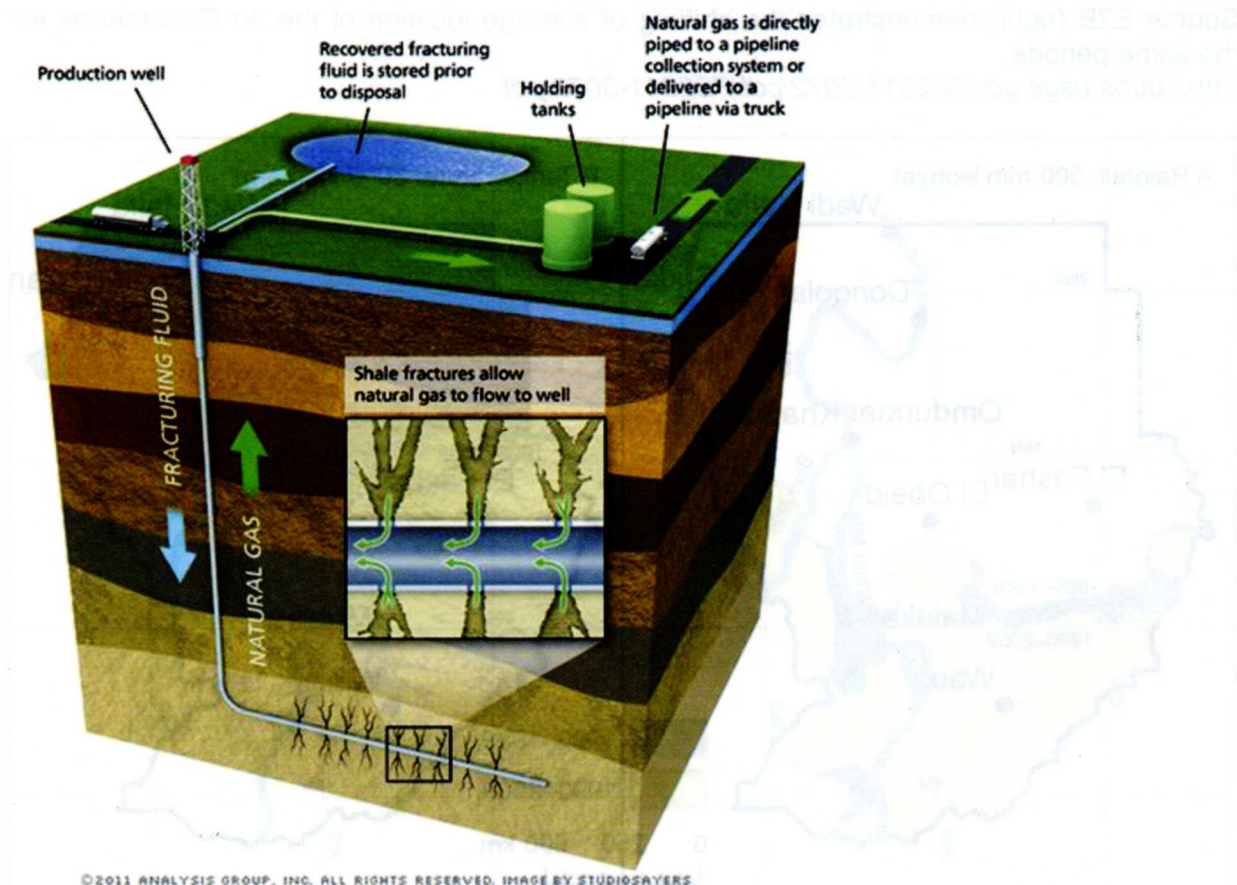
Section D: World Energy Production

Source D1: This map shows the distribution of electricity produced by gas across the world. Territory size is proportional to the percentage of electricity generated from gas that occurs there.

<http://worldmapper.org/display.php?selected=112>



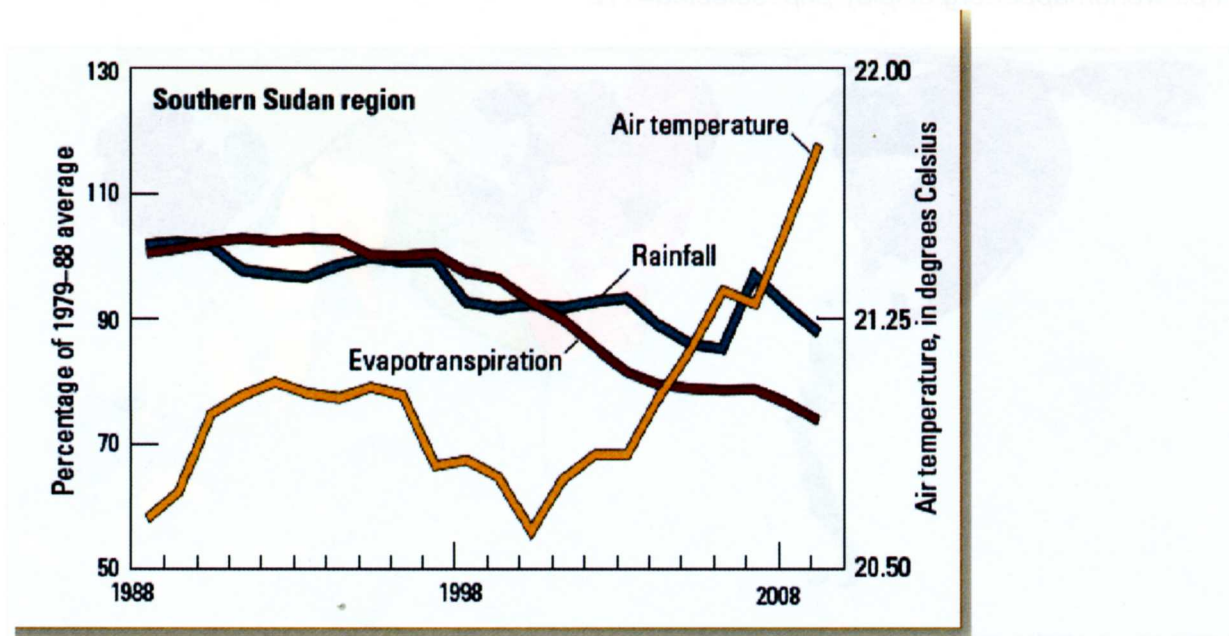
Source D2: Extraction of shale gas by fracking at great depth and high pressure.



Section E: Climate Change in Sudan

Source E1: Rainfall, average air temperature, and actual evapotranspiration for the southern Sudan region.

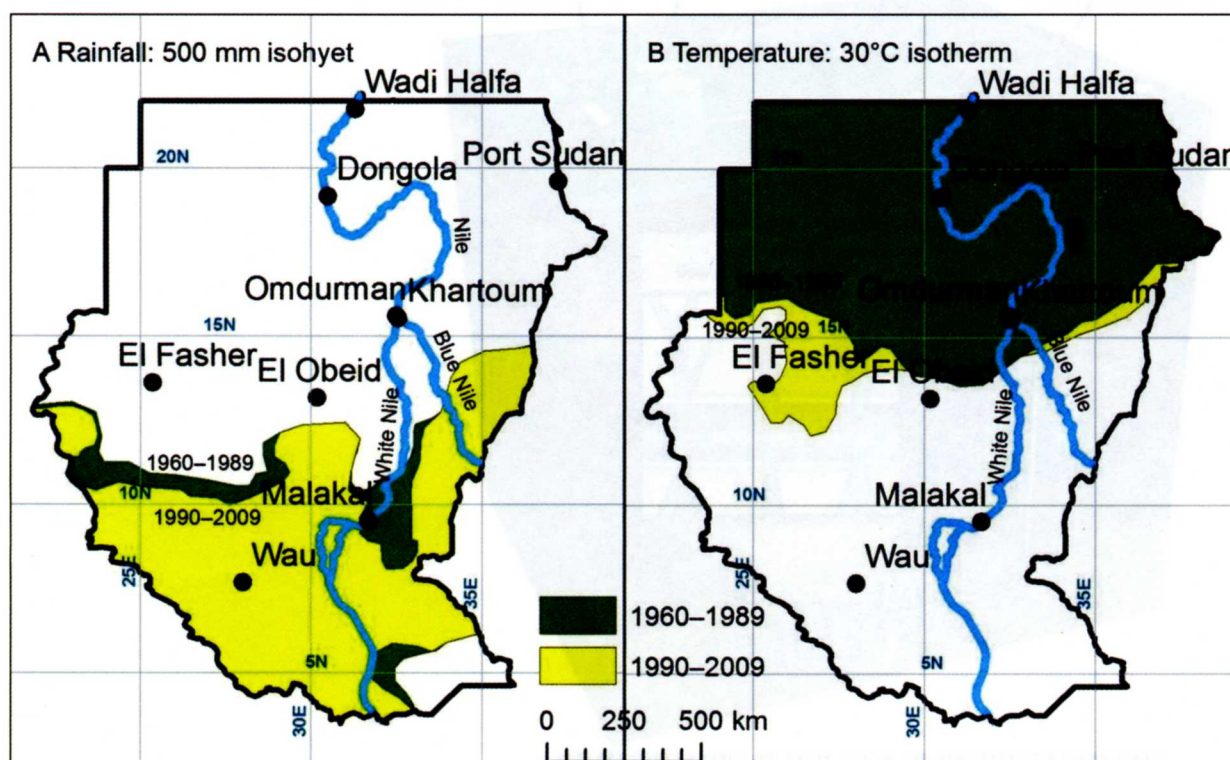
<http://pubs.usgs.gov/fs/2011/3072/pdf/FS2011-3072.pdf>



Source E2A (left) demonstrates the shifting of average location of the 500 mm rainfall isohyets from the period 1960–1989 until 1990–2009.

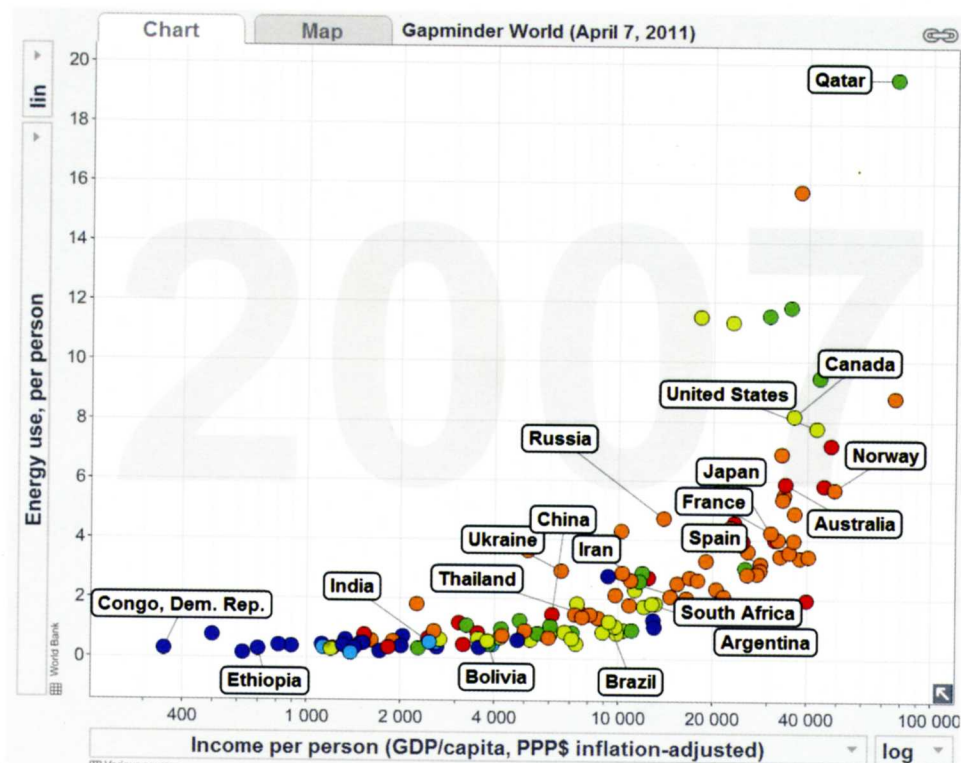
Source E2B (right) demonstrates the shifting of average location of the 30°C isotherms for the same periods.

<http://pubs.usgs.gov/fs/2011/3072/pdf/FS2011-3072.pdf>



Section F: World Development

Source F1: Income per person compared to energy use per person.
gapminder.org



Source F2: Medical doctors compared to child mortality.
gapminder.org

